



Moving from Information to Action: Considering Assistive Technology and MFP

Carolyn Phillips and Rachel Wilson, Tools for Life
With contributions from TFL Team

www.gatfl.org

For Handouts: <http://www.gatfl.gatech.edu/tflwiki>

www.amacusg.org



Tools for Life and MFP: Transformational Partnership

- Direct Service:
 - AT Evaluations
 - AT Demonstration
 - AT Lending Library – “Try Before You Buy”
 - AT Reuse – Bridging Gaps for smoother transitions
 - Lead to AT Toolkits in every AAA and ILC and more AT Labs throughout Georgia
- State Leadership:
 - Providing AT training to MFP - Options Counselors to build awareness and knowledge
 - Providing Technical Assistance - Policy for AT Consideration
 - Providing Technical Assistance – Ensuring Quality AT Services throughout Georgia
- Development of National AT Decision Tree/Algorithm Tool

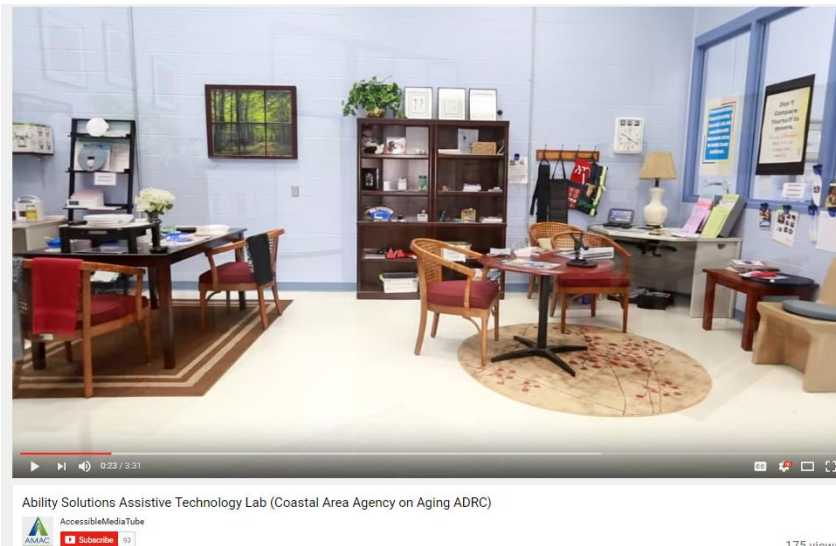


TFL and MFP – Growing Relationship

- Since 1991, TFL has been developing relationships with Division of Aging Services. AAAs and the ADRC's throughout the state of Georgia.
- This includes participating on various advisory boards and committees committed to ensuring assistance and resources for individuals with disabilities and/or naturally aging process.
- MFP representatives actively participate on the TFL Advisory Council.

AT and MFP – Expanding AT Access

- **Lead to AT Tool Kits in all AAA /ADRCs**
 - AT from all areas to support people with disabilities and the natural aging process
- **AT Solution Lab at MFP and Aging-related Conferences**
- **AT Solution Lab at the Coastal Area Agency on Aging Georgia**
 - Coastal AAA/ADRC Won the *2016 AIRS Distinguished Service Award* for their work with the AT Lab.
 - Presented at the Awards Luncheon at the 2016 AIRS Conference in St. Louis.
 - AIRS is the premier professional membership association for community I&A with over 5000+ national and international members



AT and MFP – Success!

- AT Evaluation Pilot program began August 2015:
- Proof of Concept – AT is a Key Factor to Success
- Started in 2 Regions:
 - Atlanta Region (Urban)
 - Southeastern Georgia Region (Rural)
- TFL Customized AT Evaluation Process for MFP:
 - In home and/or in nursing home
 - AT Research support to determine appropriate AT to meet needs of individuals
 - AT Report/Roadmap - extensive written report with AT recommendations and resources
 - Follow-up and follow-along consultation
- Building on these AT Services for MFP:
 - AT Demonstration
 - AT Lending Library – “Try Before You Buy”
 - AT Reuse - Bridging Gaps for smoother transitions

Success – Expanding to All Regions in Georgia in 2017

Meet Lisa !

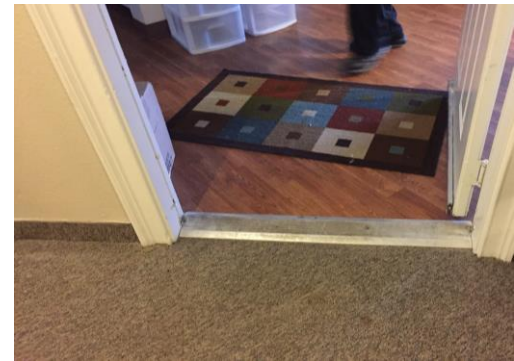


Need for AT Knowledge Transfer

- A Lot of Gaps in AT awareness and knowledge
- AT is undeniably linked to Successful Transitions and Independent Living
- Need to ask more questions – Some “don’t know what they don’t know...”
- Many **Red** “Flags”!
- Using AT to turn **RED** “flags” to **Green** “Flags”

Examples of Some “Red Flags”

Examples of many common hazards in the home



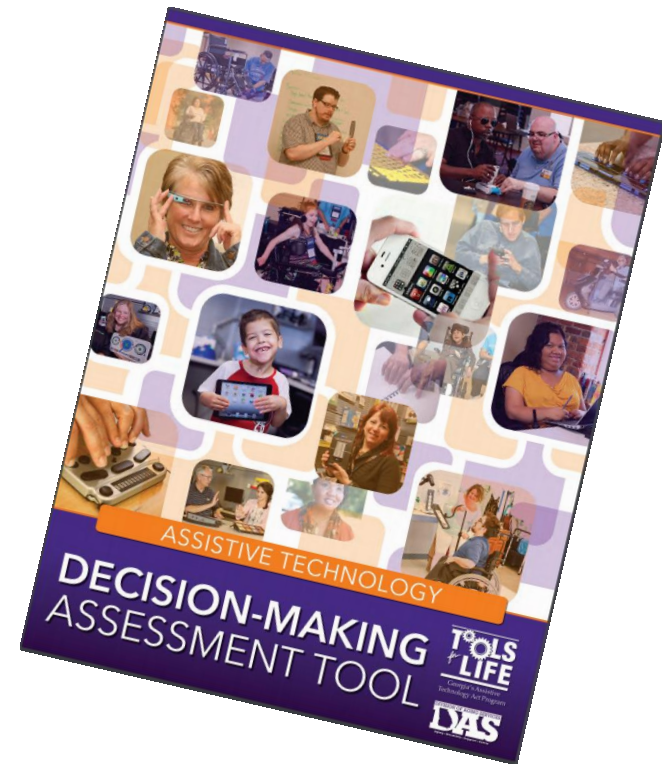
DME never
used



Medication errors

Development of National AT Decision Tool/Algorithms

- **Real-time Tool to Share What Works**
 - Learning from each other
 - AT solutions, strategies, resources
 - When to call in a professional
- **Smart-Sourcing Approach**
- **Hosted 2 Workshops – Georgia**
- **Hosting National Workshop at ATIA in 2017**
- **Growing into Specific areas – Dementia, Mental Health, etc.**



The Tools for Life Team



Carolyn Phillips

Director, Tools for Life

Carolyn.Phillips@gatfl.gatech.edu



Sarah Endicott

Research Scientist

sarah.endicott@design.gatech.edu



Danny Housley

AT Funding & Resource Specialist

Danny.Housley@gatfl.gatech.edu



Justin Ingham

Support Specialist

jingham3@gatech.edu



Ben Jacobs

Accommodations Specialist

Ben.Jacobs@gatfl.gatech.edu



Krista Mullen

Speech Language Pathologist

krista.mullen@gatfl.gatech.edu



Samantha Peters

Support Specialist

Samantha.peters@gatfl.gatech.edu



Liz Persaud

Training and Outreach Coordinator

Liz.Persaud@gatfl.gatech.edu



Martha Rust

AT Specialist

Martha.Rust@gatfl.gatech.edu



Rachel Wilson

AT Specialist

Rachel.Wilson@gatfl.gatech.edu