



# **Tools for Life: Exploring Your Assistive Technology Act Program and AT for the Workplace**

Liz Persaud, Program and Outreach Manager

Danny Housley, AT Acquisition Manager

Sam Peters, Program Specialist

Tools for Life | Center for Inclusive Design and Innovation | College of  
Design | Georgia Tech

# Agenda



- ✓ Introduction to the Center for Inclusive Design and Innovation and Tools for Life
- ✓ Guiding Principles
- ✓ Introduction to Assistive Technology and Strategies
- ✓ Funding Solutions and Resources
- ✓ Exploring AT for the Workplace

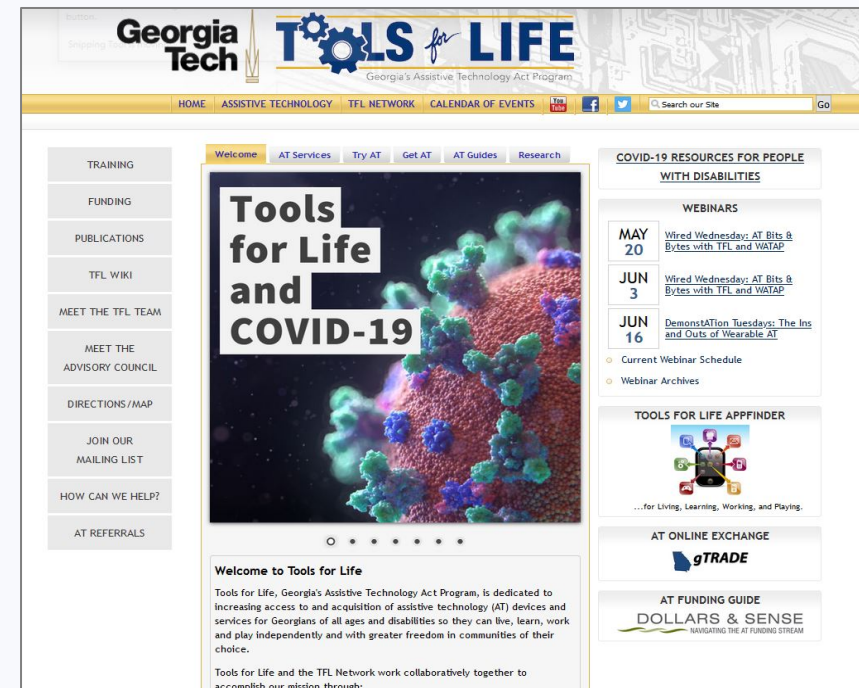
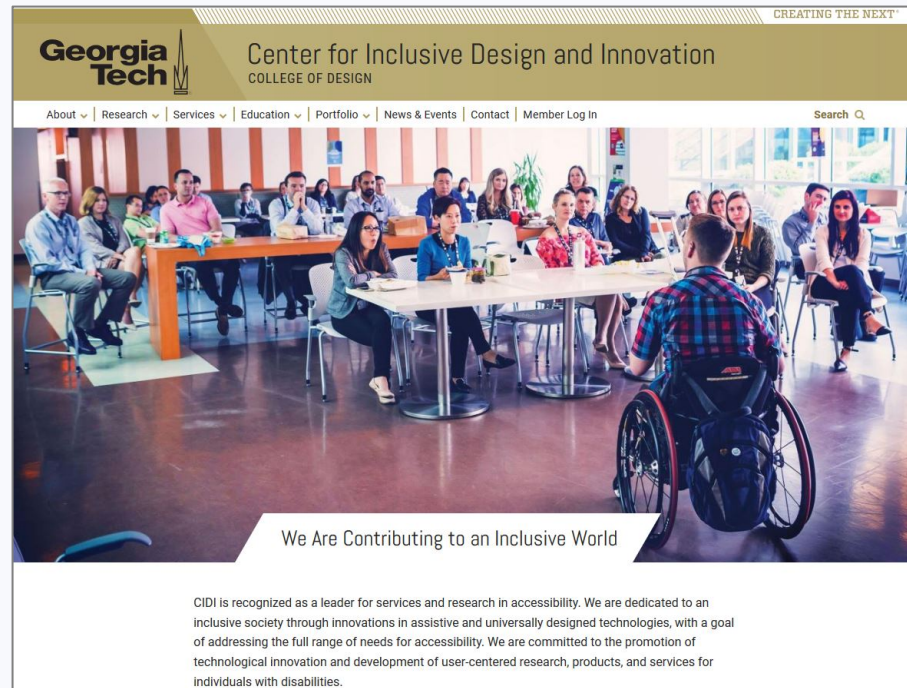


# Georgia Tech: CIDI and TFL



The Center for Inclusive Design and Innovation (CIDI) focuses on services and research in the world of accessibility. Research initiatives focus on accessible education, accessibility in the workplace, assistive technology, technology and aging, and much more. Services include Braille production, captioning and described media, digital accessibility, E-text, and assistive technology services (TFL).

Tools for Life (TFL), Georgia's Assistive Technology Act Program, increases access to acquisition of assistive technology devices and services so Georgians of all ages and disabilities can live, learn, work, and play in the communities of their choice.



# Tools for Life Core Services

As the Assistive Technology Program in Georgia, we are charged with core activities:

1. Information & Assistance
2. AT Assessments
3. AT Demonstrations
4. AT Equipment Lending
5. Training (Individuals and Groups)
6. Funding Education & Solutions
7. AT Reuse



# Guiding Principle and Public Law



Disability is a natural part of the human experience and in no way diminishes the right of individuals to:

- A. live independently;
- B. enjoy self-determination and make choices;
- C. benefit from an education;
- D. pursue meaningful careers; and
- E. enjoy full inclusion and integration in the economic, political, social, cultural, and educational mainstream of society in the United States.

*Public Law 108-364*





# Assistive Technology Services and Strategies

# What is Assistive Technology?

Assistive Technology (AT) is any item or piece of equipment that is used to increase, maintain, or improve the functional capabilities of individuals with disabilities in all aspects of life, including at school, at work, at home, and in the community.

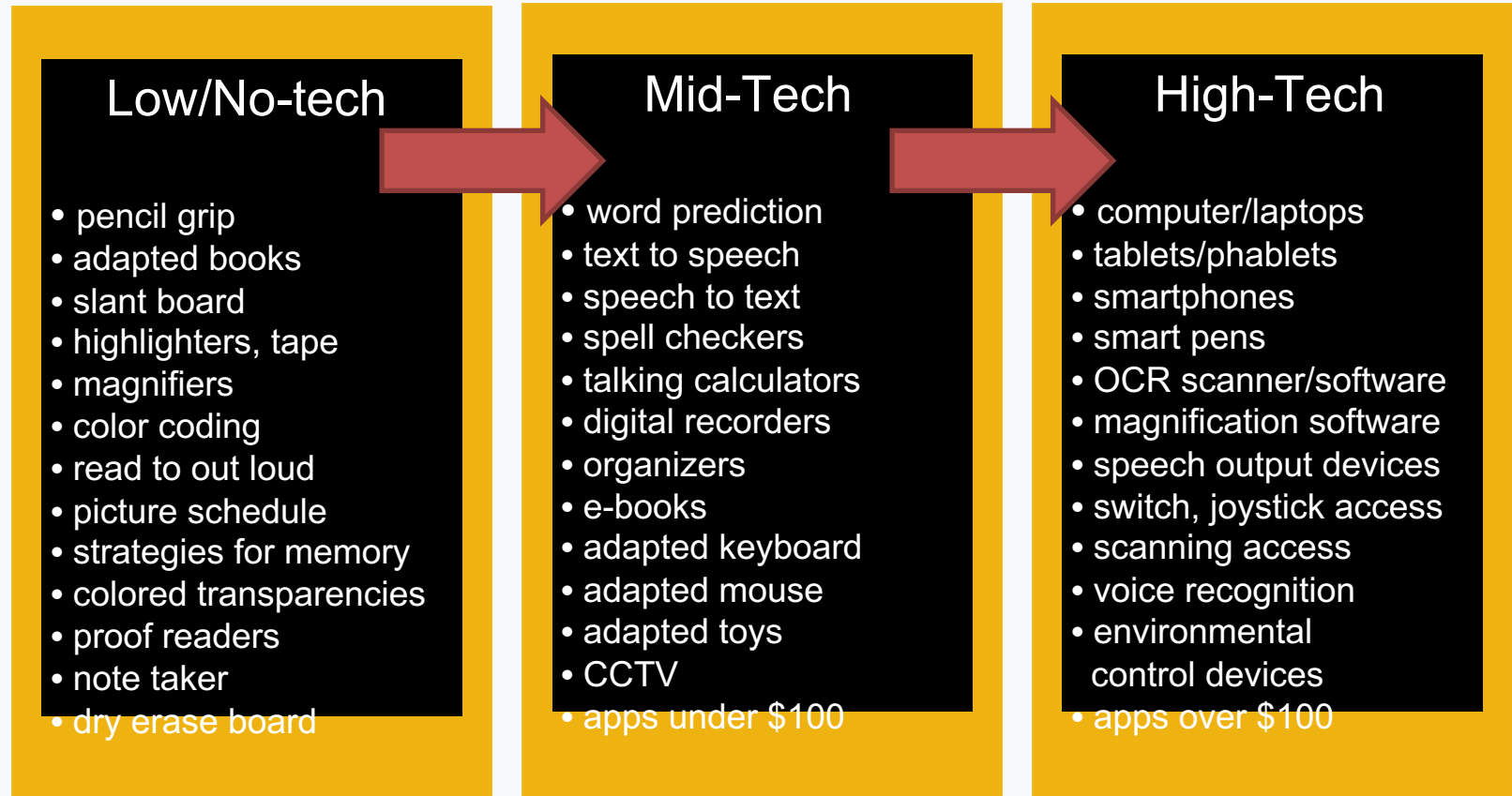




# Assistive Technology Continuum

## Observations and “Hanging out with Intent”

Assistive Technology is  
a *continuum of tools,  
strategies, and  
services* that match a  
person's needs,  
abilities, and tasks.





*Frustration*

*Anxiety*

*Stress*

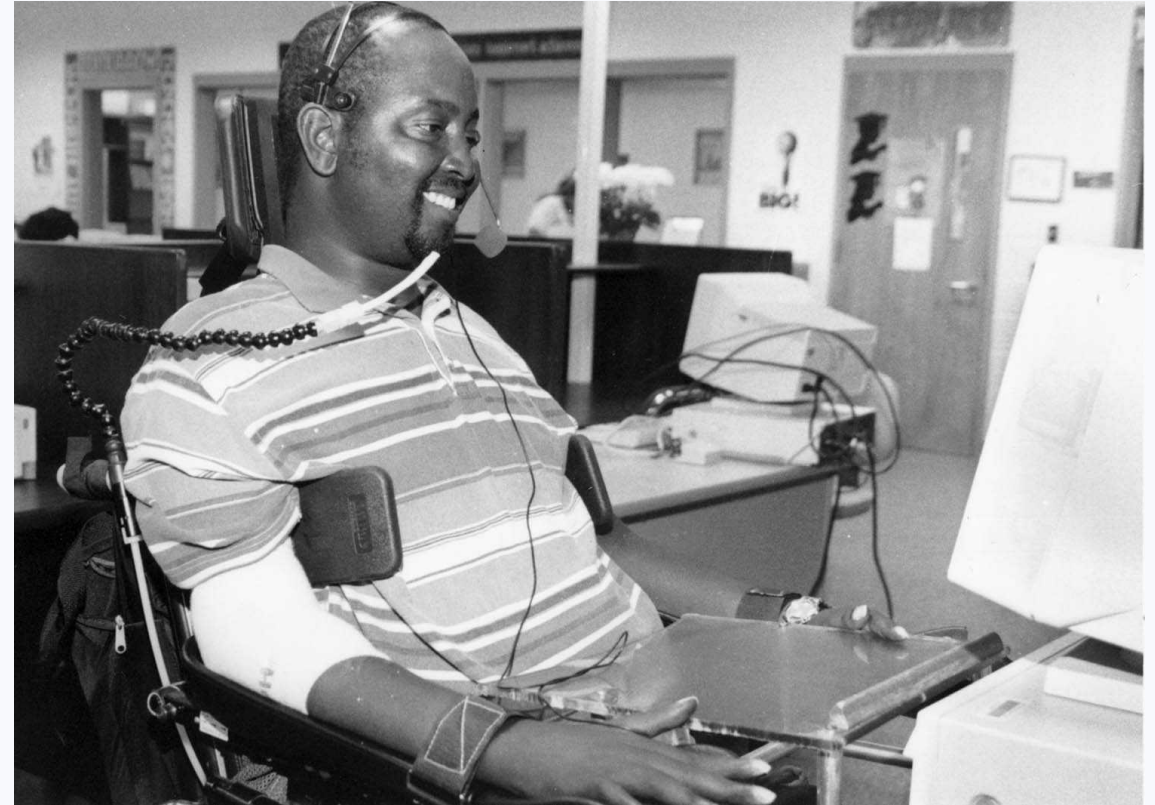
*Tension*

# Why Assistive Technology?

For a person without a disability, assistive technology makes life easier.

For a person with a disability, assistive technology makes life possible.

***Tip: USE AT! We have yet to meet a successful person who doesn't use any AT.***



# AT Demonstrations

- Free of charge!
- Learn about devices
- What will work best?
  - Assist in making informed choices
  - Consumer's choice in devices





# AT Lending Library

- Try before you buy!
- Loans are usually for 3 to 4 weeks
- Training on items before borrowing, if needed





# Funding Solutions and Resources



# Funding Resources



## Georgia's Assistive Technology and Funding Guide

- Centers for Independent Living (CIL)
- Aging & Disability Resource Centers (ADRC)
- Area Agencies on Aging (AAA)





- Resources for direct exchange of equipment between users
- gTRADE is for anyone in Georgia
- EdTRADE is specifically for K-12 institutions
- Users determine the terms of the exchange





# Training and Outreach

# Info and Assistance



## Phone

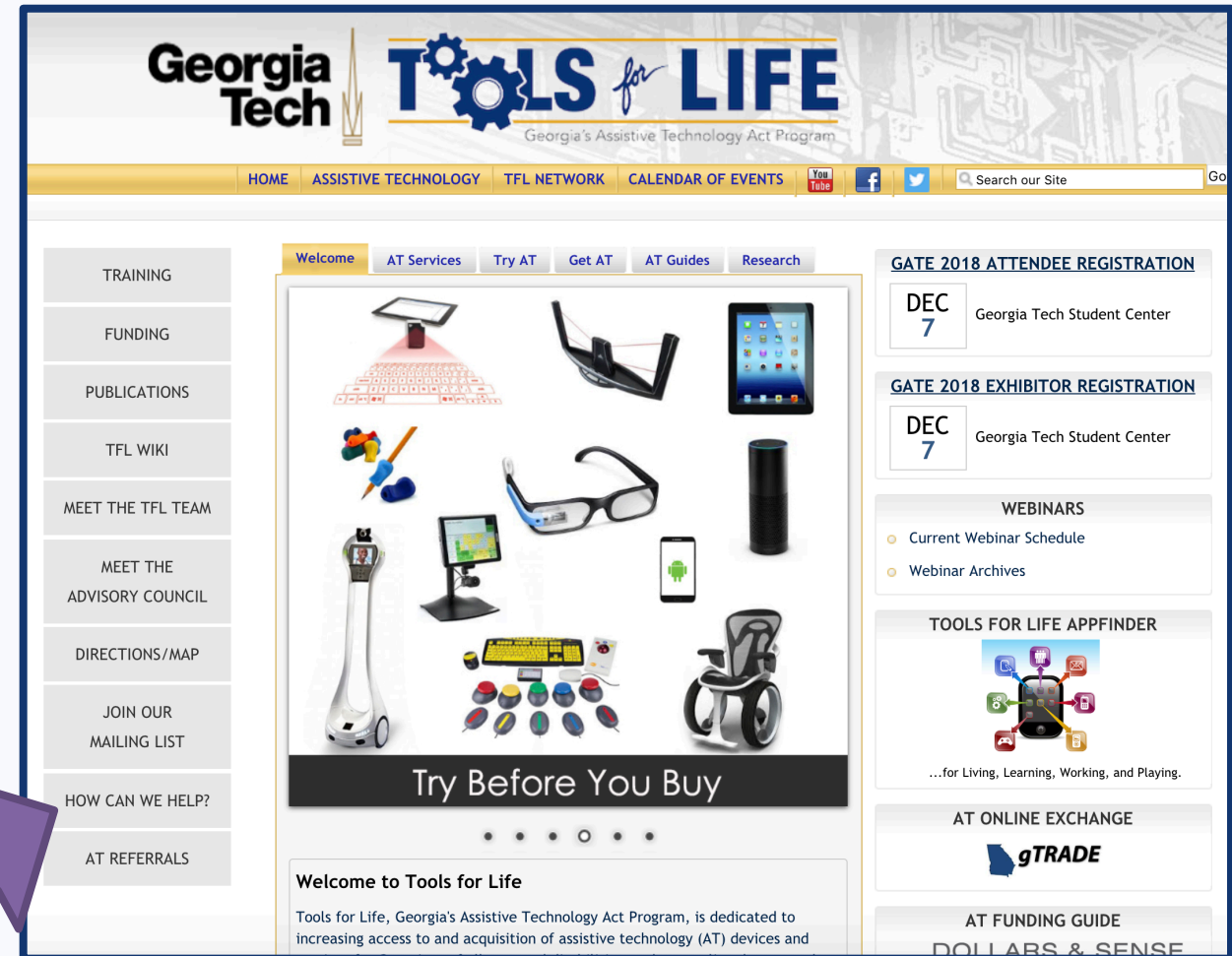
- 404-894-0541

## Email

- [info@gatfl.gatech.edu](mailto:info@gatfl.gatech.edu)

## How Can We Help?

- Online form
- Gives us information on what kind of assistance is requested





# Training

Training activities include but are not limited to:

- In person or virtual trainings
- Webinars
- Internal and external partner trainings

Variety of Topics:

- Assistive Technology (specific for disabilities)
- Funding
- Emerging Tech/Trends
- Disability awareness

More!

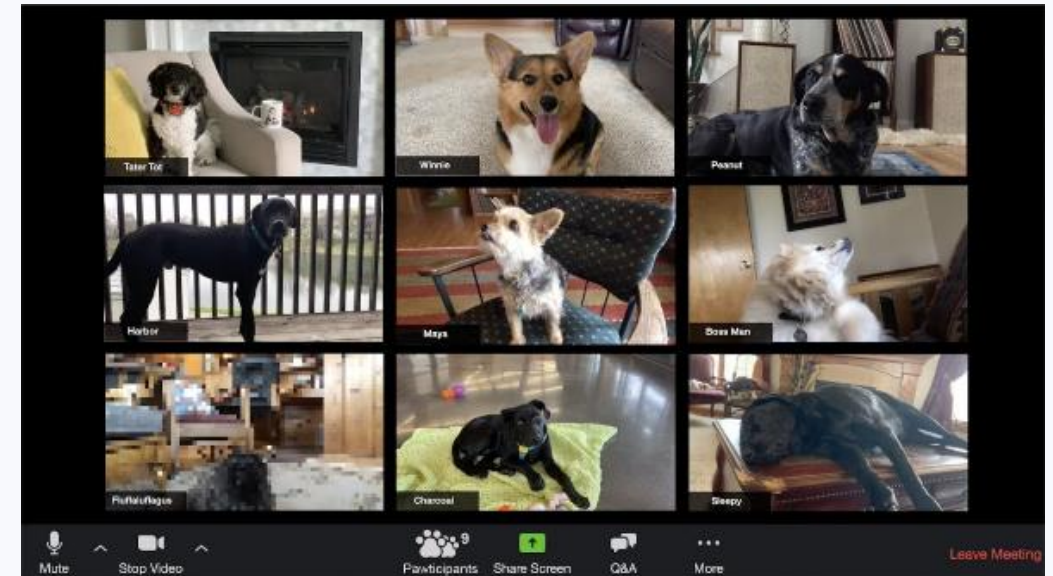


# We're Always Online

We have been actively working on translation of in person trainings, tours and conferences to virtual.

The benefit that we always offer some online component for each of our trainings. Accessibility!

- Tours of the AT, Access, and AAC Labs
- Conferences with breakout sessions
- Virtual exhibit hall





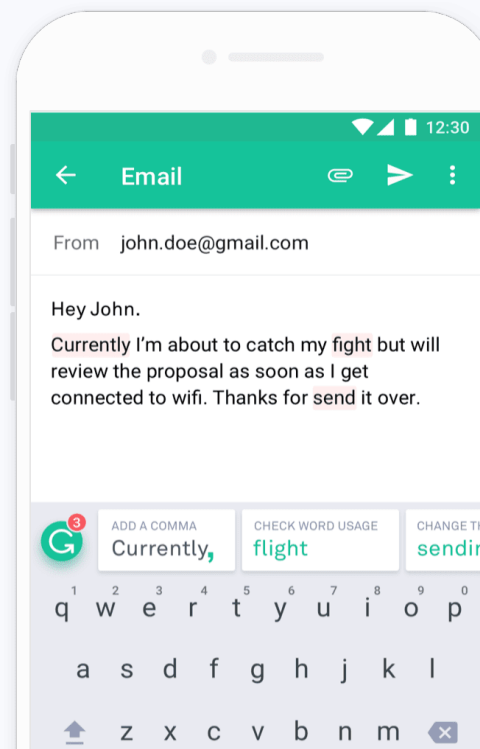


# AT Solutions for the Workplace

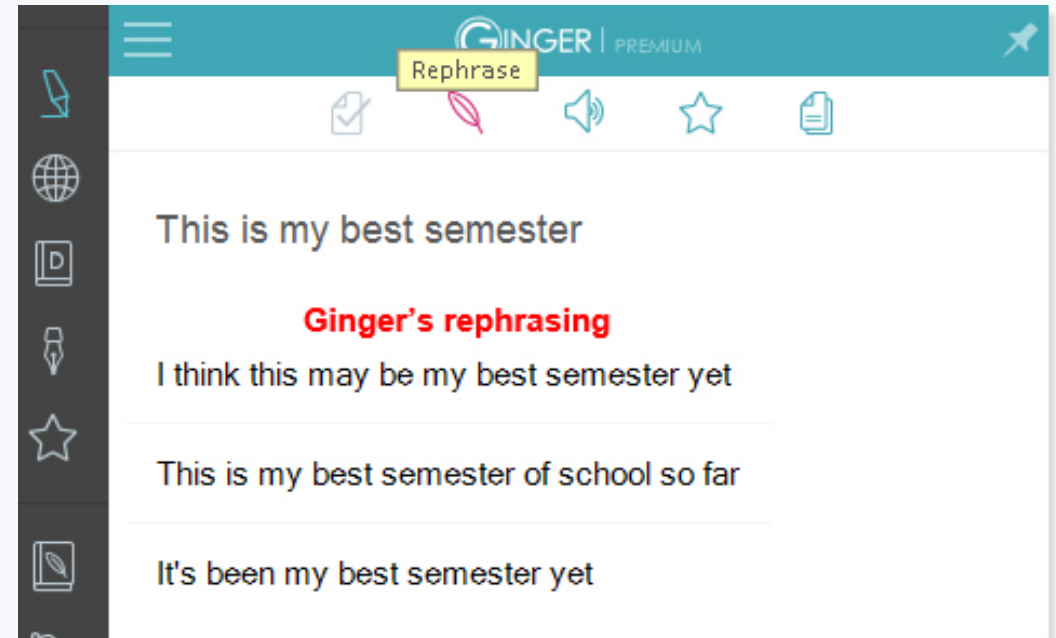
Reading and Writing



- A writing assistant that provides feedback in real-time on grammar, spelling, tone, etc.
- Compatible with most emails, MS Office, Google Suite, and has a keyboard option for mobile devices
- Free & Paid for versions
- Available on iOS, Android, and as a Chrome Extension



- [Ginger Grammar Checker](#) is a free program you can add to your browser (Chrome, Safari, Firefox) that will check your grammar, spelling, and sentence structure as you write online.
- You can also download it into your computer to check your grammar when you are using your computer offline.
- Corrects text as user types
- Available on Google Chrome, Android, and iOS



# Speech Recognition

Speech recognition software enables people to talk to their computers and watch their spoken words appear in documents, email, instant messages and more—three times faster than most people type—with up to 99% accuracy.

It lets users dictate and edit in programs like Microsoft® Word, Excel® and Outlook®, surf the web using Internet Explorer® and Mozilla® Firefox®, and command and control virtually any Windows application—just by speaking.

Examples of dictation software include Dragon for PC, Dragon for Mac and WordQ+SpeakQ.



# CaptiVoice

- A reading tool that allows users to listen to any text, customize text color and font, and improve reading skills.
- Paid for and free versions
- Compatible with Bookshare, most file sharing platforms and web browsers.
- Offers multiple languages
- Available on iOS, Google Chrome, Windows, and thru website.



**capti**

**Capti Voice**  
A reading support tool for everyone

- Listen to anything you want to read
- Personalize learning and teaching
- Overcome learning and print disabilities

# Microsoft Seeing AI

- **Seeing AI** app from **Microsoft Seeing AI** is a free app that narrates the world around you.
- Describes nearby people, text and objects.
- Available on iOS



# Built-In Accessibility

- Many computers come with an array of built-in accessibility, including:
- Screen-reading software (VoiceOver for Apple and Narrator for Windows)
- Display accommodations (high contrast and color filter options)
- Screen zoom (whole or partial screen magnification)
- Voice control options for many tasks
- Video calling capability

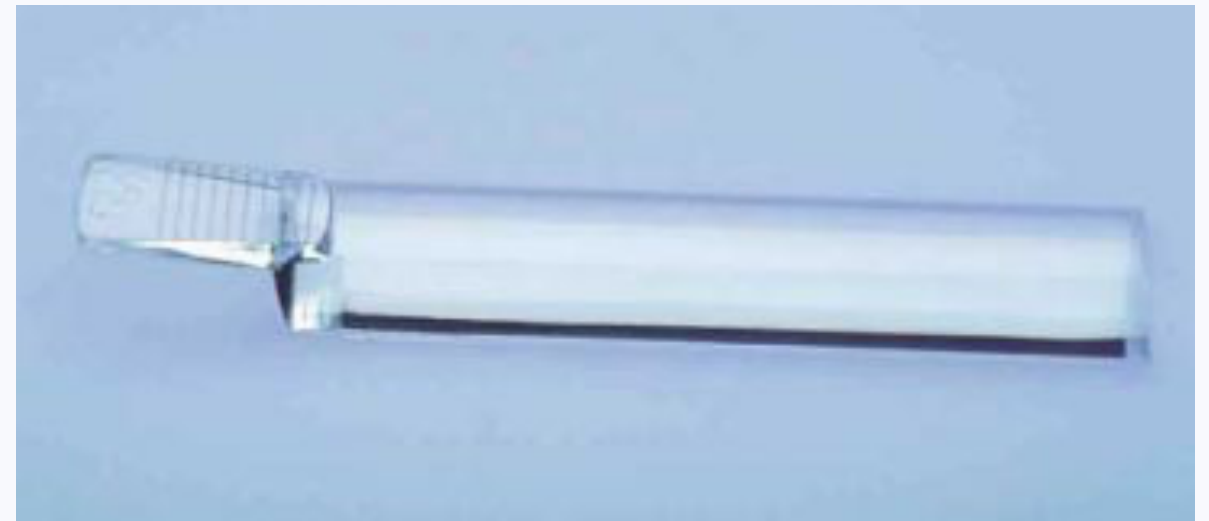




# AT Solutions for the Workplace

## Vision

# Inexpensive and Reliable





# Mid Tech Mid Price





# High Tech High Value



# Head Based Video Magnifiers







# AT Solutions for the Workplace

Executive Functioning/Organization



# Organization

Use a dry erase board or bulletin board to keep track of activities and important information

- Phone numbers
- Appointments
- Bill due dates
- Cleaning schedule
- Workout schedule

Create specifically dedicated spaces for work, sleep, and more

- For example, have your meals in your dining area rather than in your living room or bedroom. It helps to separate the activities and create routine.



# To Do Lists

An advantage to using a software-based approach to manage your list is that you can update it easily.

Instead of scratching off tasks and rewriting the list every day, software allows you to move and prioritize tasks quickly.

Examples include:

- Microsoft To Do
- Todoist
- Toodledo



# Accessible Work Spaces





# Smart Home Devices



# Tools for Life AppFinder

Search by:

- Price
- Category
- Operating system
- Includes Chrome extensions
- [www.gatfl.gatech.edu](http://www.gatfl.gatech.edu)







## COVID-19 Accessible Materials for People with Disabilities



# COVID-19 Accessible Materials for People with Disabilities Project



## Project Background

COVID-19 has disproportionately affected many groups, including the 61 million people in the United States living with a disability. While the COVID-19 guidance on CDC's website is accessible for some people with disabilities as required by Section 508 of the Rehabilitation Act (e.g., those using assistive technology devices, closed captions on videos, etc.), content is needed in alternate formats such as simplified text, braille, and American Sign Language (ASL) videos. It is important that COVID-19 guidelines are not only accessible to people with disabilities, but also that the cultural challenges are considered that people with disabilities face while trying to follow them.

## Who needs these resources?

The target audiences for the accessible materials are individuals who are blind, deaf, or have limited literacy skills resulting from a variety of factors, and some people with limited mobility. Some consumers of information may have combinations of these disabilities and some of the message formats may be used by multiple audiences. Of course, family, caregivers and various healthcare providers may benefit from the enhanced modes of messaging.

# What are we providing?



- A technique for developing ASL video scripts that use “native ASL” for more effective communication with deaf users
- Easy access to Braille, embossed or digital for refreshable braille displays
- Text simplified below Plain Language guidelines
- Web accessibility and best practices beyond Section 508 compliance
- Education and training resources to support the dissemination of the improved products and to share the processes for future uses

# Reaching our Target Audiences



- A supplementary website at Georgia Tech will host some materials and training resources.
- <https://cidi.gatech.edu/covid>



**A Closer Look: Face Masks and People with Disabilities**

***Wednesday, December 9, at 2:00 PM***

**A Closer Look: Mental Health and Resilience within the Disability Community During COVID-19**

***Wednesday, December 16, at 2:00 PM***

**Making Social Media Accessible for People with Disabilities**

***Wednesday, January 20, 2021 at 2:00 PM***

**A Closer Look: Guidance for Business and Employers Considering the Needs of People with Disabilities during COVID-19**

***Wednesday, February 10, 2021 at 2:00 PM***

Participants will be eligible for CEUs from the AAC Institute and CRCs from the Commission on Rehabilitation Counselor Certification (CRCC).

Webinars are presented through Zoom. Captions and American Sign Language will be available. All webinars are recorded and the archive, transcript, accessible presentation, as well as additional handouts will be made available within one week of the live webinar.

If you have any questions or would like more information about the COVID-19 Accessible Materials for People with Disabilities Project, please contact [training@gatfl.gatech.edu](mailto:training@gatfl.gatech.edu)

# Questions?



# Tools for Life Team



**Carolyn Phillips**

Director, Tools for Life

[carolyn.phillips@gatfl.gatech.edu](mailto:carolyn.phillips@gatfl.gatech.edu)



**Liz Persaud**

Program and Outreach Manager

[liz.persaud@gatfl.gatech.edu](mailto:liz.persaud@gatfl.gatech.edu)



**Martha Rust**

AT Access Team Manager

[martha.rust@gatfl.gatech.edu](mailto:martha.rust@gatfl.gatech.edu)



**Danny Housley**

AT Acquisition Manager

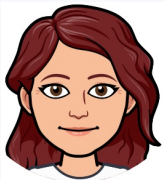
[danny.housley@gatfl.gatech.edu](mailto:danny.housley@gatfl.gatech.edu)



**Gina Gelinas**

Educational Outreach Manager

[ggelinas3@gatech.edu](mailto:ggelinas3@gatech.edu)



**Rachel Wilson**

AT Specialist

[rachel.wilson@gatfl.gatech.edu](mailto:rachel.wilson@gatfl.gatech.edu)



**Tori Hughes**

Outreach Specialist

[tori.hughes@gatfl.gatech.edu](mailto:tori.hughes@gatfl.gatech.edu)



**DeeDee Bunn**

Speech-Language Pathologist

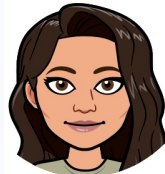
[dbunn6@gatech.edu](mailto:dbunn6@gatech.edu)



**Sam Peters**

Program Specialist

[speters37@gatech.edu](mailto:speters37@gatech.edu)



**Ciara Montes**

AT Specialist

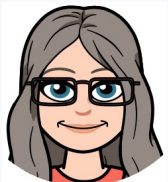
[ciara.montes@gatfl.gatech.edu](mailto:ciara.montes@gatfl.gatech.edu)



**Ben Satterfield**

Research Associate

[rsatterfield8@gatech.edu](mailto:rsatterfield8@gatech.edu)



**Sarah Endicott**

Research Specialist

[sarah.endicott@design.gatech.edu](mailto:sarah.endicott@design.gatech.edu)



**Annabel Joyner**

AT Lab Specialist

[ajoyner8@gatech.edu](mailto:ajoyner8@gatech.edu)



**Sal Kibler**

AT Services Intern

[mkibler3@gatech.edu](mailto:mkibler3@gatech.edu)



# Contact Us



## Tools for Life, Georgia's Assistive Technology Act Program

Center for Inclusive Design and Innovation (formerly AMAC Accessibility)

Georgia Institute of Technology

1-800-497-8665

[www.gatfl.gatech.edu](http://www.gatfl.gatech.edu)

[info@gatfl.gatech.edu](mailto:info@gatfl.gatech.edu)



facebook.com/gatoolsforlife



@tools4life\_at



@tools4life\_at

Disclaimer: Produced by Tools for Life (TFL), which is a result of the Assistive Technology Act of 1998, as amended in 2004. TFL is a program of the Georgia Institute of Technology, College of Design, Center for Inclusive Design and Innovation (formerly AMAC Accessibility) and was made possible by Grant Number H224C030009 from the Administration for Community Living. Its contents are solely the responsibility of the authors and do not necessarily represent the official views of HHS.